

## Mold Town Council

Un Llais Cymru



One Voice Wales

### Site Visit Report

**Date of visit: 02.12.25**

**Report by Sam Langdon**

Mold, Flintshire, CH7 1AB

<https://maps.app.goo.gl/agjQVJ7L3QaJC1RW8>

### Observations

Mold is home to around 10,000 residents and is comprised of 4 wards – Broncoed, East, South, and West – represented by 16 councillors.

#### Designated sites within 2km of the sites visited:

- Chwarel Cambrian, Gwernymynydd SSSI
- Alyn Valley Woods and Alyn Gorge Caves SSSI
- Alyn Valley Woods / Coedwigoedd Dyffryn Alun SAC

### Background information

The area of Y Wyddgrug (Mold) has a long history with known habitation from the Bronze Age right through to today. The Welsh name means 'burial / tomb mound' and likely refers to the prominent mound on which the castle was later built. While not from this burial mound, one of the most famous and exquisite examples of Bronze Age artistry was discovered nearby in 1833 – the Mold Gold Cape. During the early Medieval period, the geography of northeast Wales, being more accessible than other areas, meant that the Anglo-Saxon kingdom of Mercia frequently fought the Welsh kingdom of Gwynedd over its control – being referred to as 'Perfeddwlad' (middle country) or 'Gwynedd is Conwy' (Gwynedd below the Conwy) to the Welsh. There is even a local legend that a Christian Welsh force led by St. Garmon defeated an invading pagan Pict-Anglo-Saxon coalition army without any fighting by shouting 'alleluia' in unison. Following the Norman conquest of England in 1066, the English king William set up the Marcher lordships along the Welsh border – semi-independent Norman rulers who would defend England from the Welsh while being free to take land as they could. It is here that the first motte-and-bailey was erected in Mold in the 1140s by Robert de Montalt. It is from this lord that the English name for the town is believed to be derived. The castle attracted trade and visitors, and over time a town developed around the castle. The high street was built deliberately wide to accommodate a large weekly market – a tradition alive to this day. Following the Industrial Revolution, northeast Wales became an important supplier of coal. There were protests held in 1869 in Mold against the colliery owner John Young who cut wages and banned the use of Welsh in the mines, and 2 men were shot by the military when protesters started throwing stones. Today, Mold is one of the most important urban centres in Flintshire, being important for services, retail, industry, and culture, and is a gateway to the Clwydian Range and Dee Valley National Landscape.



## Site 1 – Maes Bodlonfa

<https://maps.app.goo.gl/GXXWAXTitvKMQxNs6>

Maes Bodlonfa is a large, open grassy area in the centre of Mold that sees use by large numbers of residents for sports, recreation, dog walking, and events. It is split into two connected but distinct fields – The Rec and Kendrick’s field.

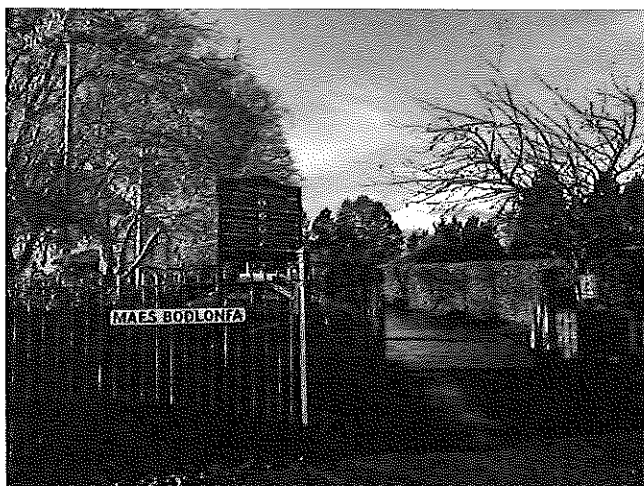
Kendrick’s field has been allocated as a dogs-off-lead area to give people a place to exercise their dog while hopefully relieving pressure off the rec.

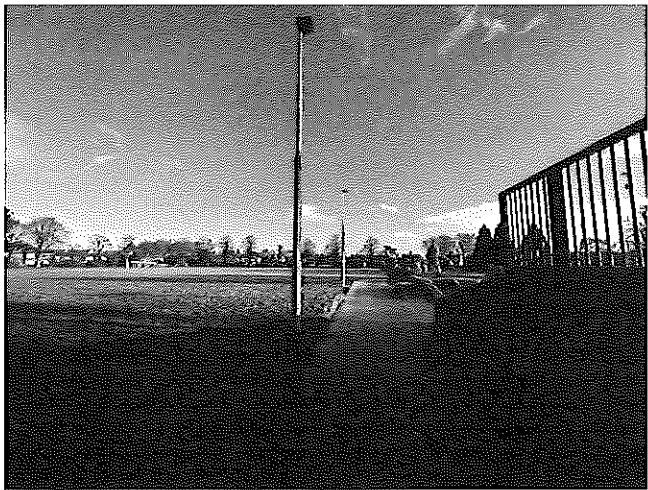
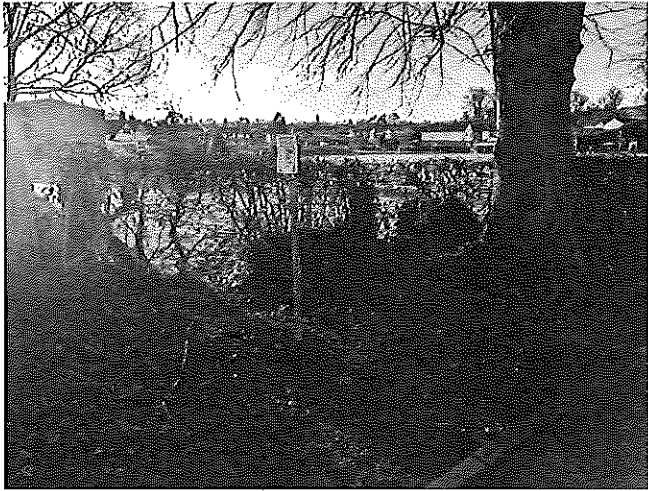
The whole site is owned by Flintshire County Council, though Mold Town Council are stakeholders, and are hoping to facilitate a friends-of group to take an active role in the management.



*Map centred over Maes Bodlonfa showing the current satellite image (Google maps 2025) and the OS map from c.1830-80 (National Library of Scotland).*

The main entrance to Maes Bodlonfa passes a now disused water fountain created in celebration of George V’s silver jubilee. A tarmac road bordered by hedges and a row of trees runs past the tennis club to the Flower Gardens. The two fields open onto either side of this road.





## Overview of site

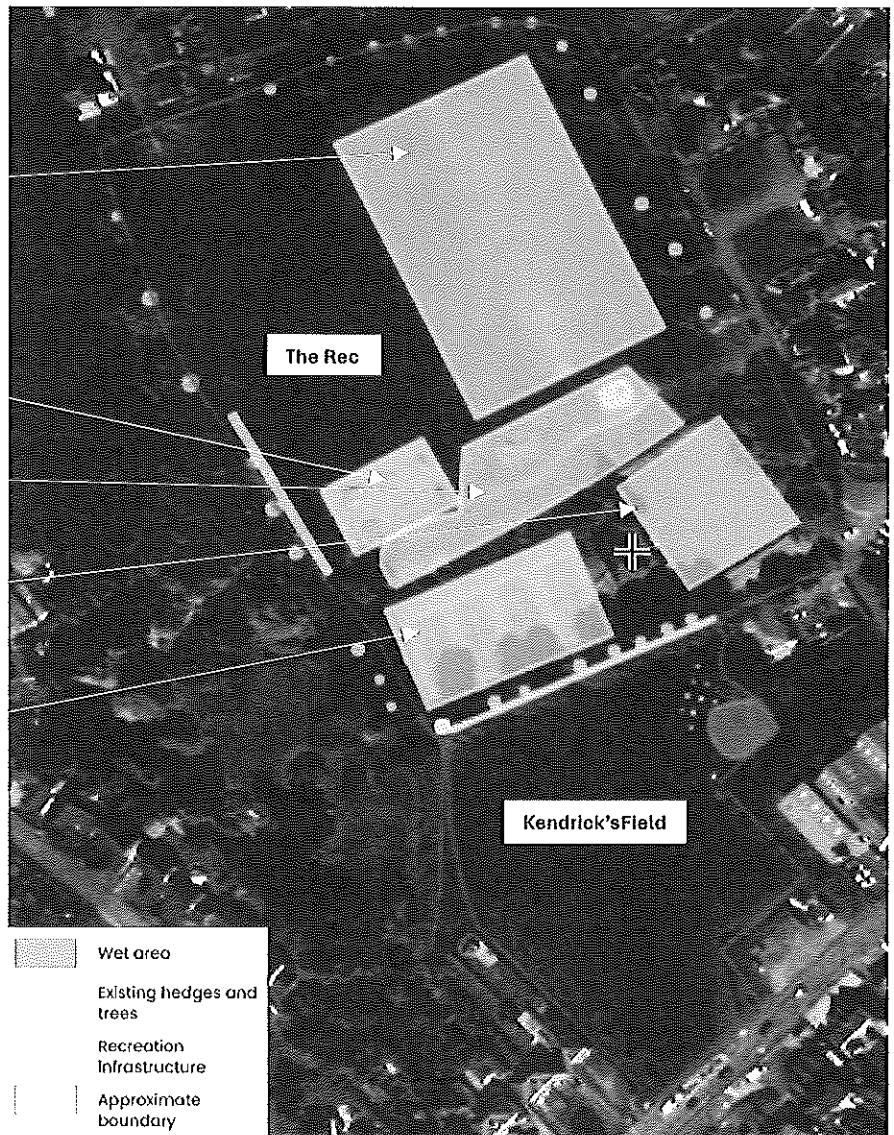
Football pitch

Skate park

Play park

Bowls club

Tennis courts



## Overview of site with suggestions for biodiversity enhancements

**Changes for pollinators.** Currently, there is very little to attract pollinators to this large green space. By relaxing mowing and introducing wildflowers you will provide the forage needed by pollinators. This can then be complemented by a formal insect hotel or bee tower, so the pollinators stay in the area.

**Filling in the gaps.** There are a good number of large trees that border the park, but these could be complemented with smaller trees or shrubs. Arboreal species prefer to move around without touching the floor, or at least minimising the time spent on the floor. By filling in the gaps between the trees you provide better movement corridors for these species.

**Start on the edges.** The large open space of mown grass is a major barrier to wildlife. While this cannot be changed due to its importance to residents, you can create habitat and movement corridors around the border. A combination of a new hedge and wildflower border would cause minimal impact to the recreational use while creating invaluable habitat.

**Attenuation pond.** If this section of the field becomes boggy during rainfall, you could harness that for the benefit of wildlife. Ponds not only capture and hold water, drying out nearby areas, they are also one of the most impactful changes you can make for biodiversity. A hazel or willow woven fence makes an aesthetic and effective barrier if you are concerned about safety.



## Suggested improvements

Given the heavy footfall of Maes Bodlonfa and its importance for celebratory events, it would be inappropriate and ultimately futile to suggest or try to implement large changes to the overall park. For this reason, I have focused all my suggested changes around the borders, enhancing the features that are already there or adding new one.

### Hedges.

Despite being man-made, hedges are crucial for a wide range of species. They are a shelter from predators, they are a stable food source, they are a secure nesting place, and a safe movement corridor. They do all this for wildlife while also being an effective boundary for our plots of land, acting as a wind and noise break, cleaning our air, and providing us with food.

Where there are no hedges currently – the entire southern boundary of Kendrick’s Field, for example – a new native hedge should be planted to provide all the above benefits. In total, I have suggested planting approximately 300m of hedge. When creating a field boundary, it is normal to plant whips (i.e. saplings, small trees) at a rate of 5-6 per metre, meaning a minimum of around 1500 trees. This would also be accompanied with some kind of mulch or vegetation suppressant – bark chip and sheep’s wool, for example.

A critical point when planting a new hedge is the aftercare. Given the ever-increasing volatility of our climate, a new hedge will likely need to be watered through spring and summer. To make this more manageable, a transportable water bowser is recommended. While it is possible to water a hedge of this size by hand, transporting and storing the volume of water required will likely make it unrealistic.



*Example of new native hedge planted in a wildflower meadow (Corwen 2024). A path was mown through the meadow to allow easier access to water and weed the hedge while it was establishing.*

The trees will need to be managed to create a thick, healthy hedge. I would avoid trimming the trees in at least their first year as they establish. They will already be stressed from the planting and cutting them will only exacerbate this. Wait for the trees to show signs of growth (increased diameter, height, new shoots, etc.) before deciding the cut them. This may take a few years

depending on the weather and growing conditions. The best way to manage a hedge is to lay it. This is an ancient technique that prolongs the life of the trees and creates a thick hedge. Hedge-laying has a strong community in northeast Wales, so there will be opportunities to run engagement events or pay for professionals. Hedges only need to be laid every 5-10 years, meaning they effectively manage themselves for long periods of time. Alternatively, if you decide against hedge-laying, trimming the hedge is fine if it is done correctly. Firstly, avoid flails; flails snap rather than cut, leading to unclean cuts in the trees that are easily exploited by pathogens. Cut the trees using hedge trimmers in an 'A' shape, meaning the hedge is wider at the base than it is at the top. This is important to allow light to reach the entire hedge and to promote lateral growth. Best practice would be to break the hedge up into sections and stagger the cuts - i.e. cut one side of the field in year 1, then the next side in year 2, and so on. This creates variation in the habitat which provided more opportunities for wildlife. It is also important to avoid cutting the hedge to the exact same height every time it is cut. Repeated cuts in the same location will eventually lead to scar tissue forming – what is known as a 'knuckle' – where the tree stops producing new shoots. This is very common in hedges in the countryside and is a symptom of mismanagement.



**Comparison of a mismanaged and well-managed hedge.** The hedge on the left is a very common site across the countryside. It is damaged from being flailed repeatedly, it is very gappy from trees dying, it is very short and narrow, and uniform in height. The hedge on the right is thick, wide, is allowed to flower and fruit, and has a varied height structure.

Finally, the timing of hedge management must fall outside of the bird nesting season. Best practice, however, would be to wait until the whole hedge has finished flowering and fruiting before any management is done. The timings will depend on both the local climate and weather of any given year, but if there are still fruit on the trees, then they are still needed by wildlife, and management should be avoided. So, while you may be allowed to cut the hedge on September 1<sup>st</sup> provided there are no birds still nesting, the trees might still be fruiting. Cutting them during this time will still negatively impact birds and other wildlife, even if no laws are being broken.

#### **Wildflowers & Mowing changes.**

As with the hedges, I have restricted the mowing changes and introduction of native wildflowers to the borders of the field. They go together with good hedge management, as it is generally advised to not cut the grass right up to a hedge to both avoid root compaction of the trees and to create an edge habitat or buffer-zone between the managed grass and the hedge.

Changing mowing practice to meadow management is becoming increasingly popular amongst land managers as it is an easy way to greatly benefit wildlife. Simply by cutting less often (ideally once or twice a year) and removing all the arisings an incredibly valuable habitat is made. The UK has lost approximately 97% of its native wildflower meadows since the 1930/40s, meaning less than 1% of the land area is now wildflower meadow. This loss of habitat compounded by other factors, such as pollution and climate change, are leading to a catastrophic decline in our invertebrate populations. Invertebrates are crucial to essentially all food webs on the planet and are also vital in producing food for people. Without them, the planet will be uninhabitable. It is therefore imperative that we start to replace the habitats we have lost. 1 acre of species rich wildflower meadow can produce 1kg of nectar per day, which can feed 100,000s of invertebrates, from 1,000s of species.

As already mentioned, creating a native wildflower area is simple; simply stop cutting the grass every few weeks and dropping the arisings. Instead switch to cut & collect both before the growing season – around February, and after the growing season – in August or September. This management has several benefits: the plants are allowed to grow through their full growing cycle, so they are providing the habitat and food for wildlife for longer. The plants are then allowed to set seed, meaning there will be new growth the following year. Removing the arisings removes nutrients from the ground, which increases competition amongst the plants for resources, which results in more diversity. Wildflowers grow best in nutrient poor soil where they are not outcompeted by grasses. By managing the grassland in this way, the diversity should begin to increase naturally, with no further input required.

If no increase in diversity is observed, however, perhaps because the seed source has been diminished from prolonged intensive management or the soil is simply too enriched, you can try either cutting again mid-summer or introducing native wildflower seed. I would recommend cutting mid-summer if grasses are still growing very thick despite the two cut & collects, or unwanted species like nettles begin to dominate – this would likely be a sign that the ground is still very nutrient rich and therefore more cuts are needed to remove the nutrients. If the grasses are not growing very thick and nettles are not growing but there are still no wildflowers, this might be a sign that the seed bank is depleted and there is no source nearby. In this case, simply sow native wildflowers. It is important to note that long grass is a valuable habitat in of itself and should be valued as such, regardless of the wildflower population. The loss of some of our most charismatic invertebrates, such as glow worms, can be attributed in part to the loss of long grassy areas. Cock's foot, a common meadow grass, is often cited as an incredibly valuable food source and shelter for invertebrates, reptiles, amphibians, mammals, and birds.

What needs to be considered with meadow management is that you have contractors with the machinery to cut and collect and somewhere for the arisings to go. For smaller areas, this can be as easy as dumping the cuttings on site somewhere where they get sufficient sun to break down. Otherwise, the cuttings may have to be taken off site and composted – either on another site owned by the council or taken by the county council as green waste. There is normally a charge for this. There is the option to apply for grant funding to buy specialised cut and collect machinery, though the grant funding will not pay for ongoing maintenance of that machinery.

## **Pond and swales.**

It was mentioned during the visit that one corner of Kendrick's Field can become boggy during rainfall. Wet ground is incredibly valuable for wildlife but is not always desirable in a public space. I suggest formalising the boggy area of land as a pond or rain garden. A pond is simply a freshwater body characterised with a mix of open water and freshwater vegetation. A swale is a shallow trench that directs water to the pond. A rain garden is a shallow depression in a boggy area filled with plants that thrive in wet ground. Water is normally stored in a rain garden temporarily so there is not always standing water.

I would recommend a pond as they are another natural habitat we are losing at an alarming rate and they are one of the most impactful changes you can make for biodiversity in a given area. A pond is also a great way managing surface water – collecting water from a wider area into one place – meaning the recreational ground would be drier. Ponds improve the resilience of a habitat, collecting and cleaning water during times of heavy rainfall, and storing and slowly releasing water in times of drought. They are also great engagement opportunities – pond dipping is a really easy way to engage people in nature, and the variation of species living in a pond is always fun and surprising.

When making a pond, it would ideally be unlined but depending on the soil type and whether you would want water to be present all year, it might be better to line it. When digging the pond and swales, the banks should all be shallow (follow a 1:20 profile). This is beneficial for wildlife – plants can grow on the shallow banks and animals can safely enter and exit the pond – and for people – it is easy for people to access the pond for maintenance and for people to walk out of it should they find themselves in it. A pond should have a deep section, generally in the middle, that can be 50cm or deeper. This is important to regulate the temperature of the water, to provide shelter for animals, and it provides stable overwintering habitat – especially important for amphibians. The edges of the pond should be very shallow (1-10cm deep) which is where animals would drink, birds would bathe, and amphibians would lay eggs.

A mixture of native plants could be planted in the pond to speed up the colonisation process and to make it more attractive to residents. Oxygenators should be planted in the deeper areas of the pond; these provide habitat but also keep the water from becoming stagnant without the need for pumps. Marginal plants should be planted in the shallower areas, again to provide habitat, but also to strengthen the soil and absorb water. Native pond plants include submerged oxygenators – spiked water-milfoil, rigid hornwort, water violet; floating – water-crowfoot, frogbit; marginal – water-forget-me-not, bogbean, watermint, yellow flag iris, etc.

Swales follow much of the same principles as the pond, except they are shallower and really function to collect water and divert it into the pond. They could also be planted with vegetation, though this can happen naturally. They should be graded very shallow so that the water is gently flowing to the pond (aim for 1-4% gradient).

To ensure the pond is both safe and a feature that people can enjoy, you should consider fencing around the pond and installing signs that both warn of the pond while also sharing engaging information about the wildlife in the pond and its function as sustainable urban drainage. You could consider a viewing platform as well – somewhere people could safely stand and see into the pond.

Woven hazel or willow fencing is an aesthetically pleasing, natural fence that works just as well as a safety boundary while also stopping dogs from entering the pond. Stopping dogs from entering the pond is a crucial biosecurity measure to stop the spread of diseases that could harm wildlife. You could also use post and rail, though this will not stop dogs. Wire fencing is an option but is less aesthetic.

Ponds can be dug by hand with volunteers or created by experienced contractors depending on the size of the pond and connected swales and the budget. Swales are not strictly necessary, but they help collect water from a larger area without having to dig a big pond if standing water is a real issue.

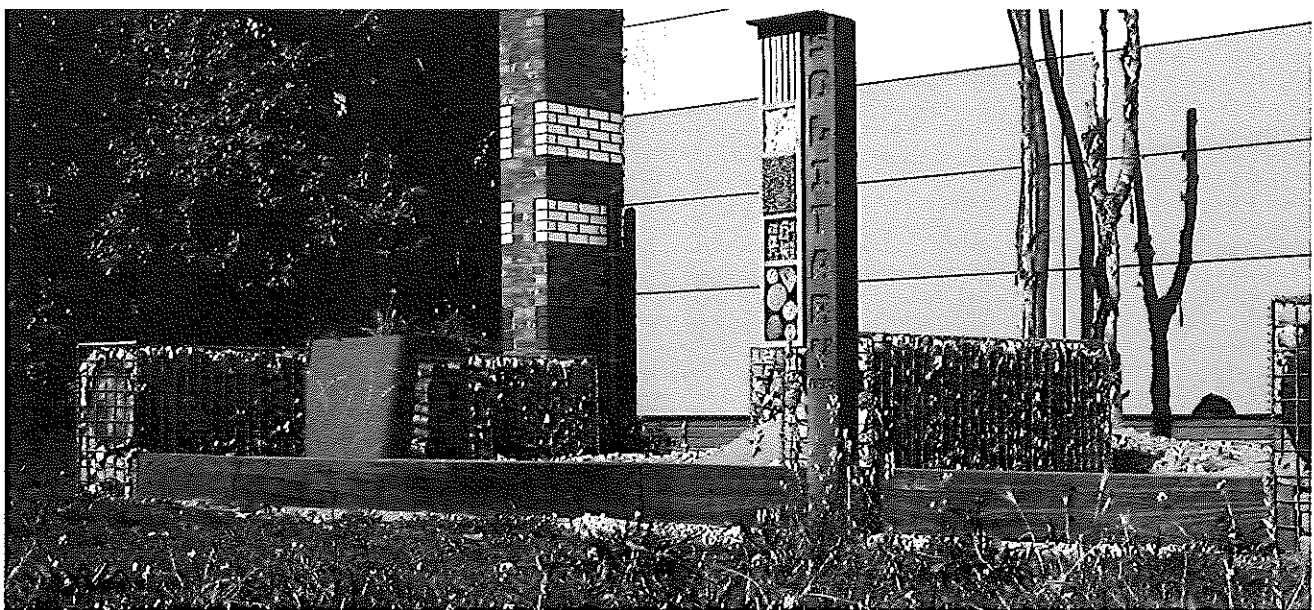
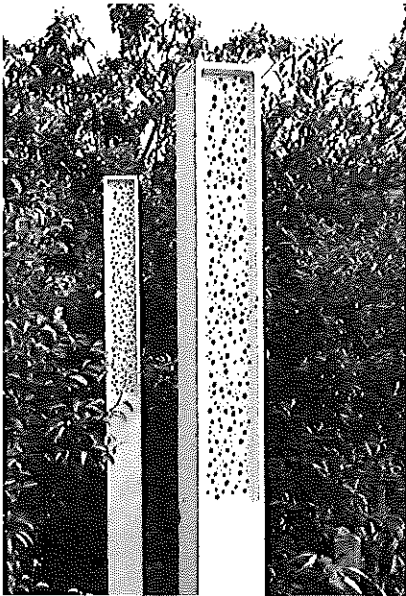


*Example of a small pond dug by hand. This photo was taken a few weeks after digging brand new pond in a disused raised bed in an urban community garden. The only cost involved was to buy the liner, all the work was done by staff and volunteers, and the materials other than the liner were sourced from managed countryside sites by staff. The weaved fence was made with the help of children during an event in the community garden.*

### **Bee Tower / Invertebrate Structure.**

This is a little extra improvement that could be placed on the boundary of the park. The reasoning is that if you adopt the changes in this report, you will be creating a lot of valuable foraging habitat for invertebrates, but they won't necessarily have increased nesting habitat. A bee tower or something similar would provide that nesting habitat. There are many different types of structures that could be used here, which type of structure used depends on the target species. You can have multiple different structures or be creative with your own designs to incorporate aspects of different ones in a single structure. I have included some pictures that show what kind of options there are.

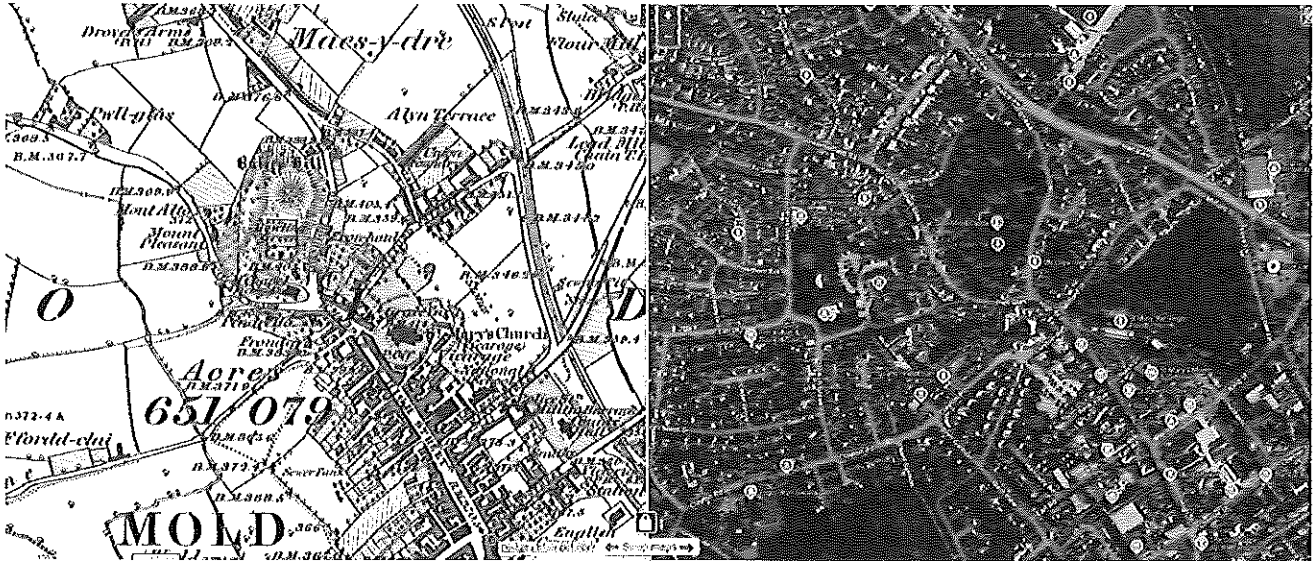
The more varied a habitat is, generally, the more valuable it is for wildlife. So, when buying or making an invertebrate structure, ensure there are lots of hiding spots, lots of different sized holes, different substrates and materials, and different heights, temperatures, and light levels.



## Site 2 – Bailey Hill

<https://maps.app.goo.gl/SxvYYKhbM11bkD7W9>

Bailey Hill is the name of the public space owned by Flintshire County Council which covers the area where Mold Castle once stood. Mold Town Council lease the visitor's centre, and a 'friends of' group help maintain the site.



*Map centred over Bailey Hill showing the current satellite image (Google maps 2025) and the OS map from c. 1830-80 (National Library of Scotland).*

The site is a mix of closed canopy woodland, scrub, and open grassland, with interconnecting paths across the whole site. There are varying levels of management, ranging from minimum intervention to manicured. The site is a scheduled ancient monument (SAM, FL014).





### **Suggested Improvements.**

Given that Bailey Hill is a SAM, it comes under the jurisdiction of CADW, and it should already have a specific management plan. It is worth speaking with FCC if you do not have a copy of a management plan – these are often made with the input of CADW. For this reason, I will not suggest any sweeping changes to the management, only basic concepts to be aware of.

### **Native vs Non-Native.**

Generally, always stick to native plants. Non-native plant species now outnumber native species in Britain (Plant Atlas 2020, GBNNSIP), adding to the already stressed environment from land-use changes and climate change.

While there is an argument to be made that the changing climate in Britain means we need to be planting for the future, which might include planting non-native species, we should not be introducing non-native species into the countryside or into fragmented and isolated pockets of native habitat.

### **Wild vs Manicured.**

Try to maintain a balance between areas that are heavily managed for use by people, and areas that are managed with minimal intervention. Edge or transition habitats are often the most diverse as they contain many different niches, so having lots of gradients from simple to complex habitats, managed to unmanaged habitats, is important. Bramble is incredibly valuable to wildlife, being food, protection, and nesting habitat, and is significantly associated with increased breeding bird populations and overall population.

Even 'unmanaged' habitats might need managing though, a wildflower area might seem unmanaged to some, but you still need to cut it every year. Scrub, if left uncut too long, will eventually be replaced by trees. As long as there are always some areas that are left undisturbed, wildlife will have somewhere to retreat to.

## **Trees.**

In a woodland as small as this, some normal management principles of open vs closed canopy, and light levels might not apply. You normally want to break up a woodland with open canopy glades, but as the woodland is so small, open glades just end up fragmenting the woodland. Regardless, there are already large open spaces, so I wouldn't recommend making any new ones. I would instead focus on ensuring that trees are surveyed for health issues, and that there are young trees growing through to replace the older ones as they inevitably die off. This is another reason why leaving scrub undisturbed is important – bramble protects young trees as they are growing.

## **Protected and Priority Species.**

This should be self-explanatory, but management cannot break the law.

The main laws that cover wildlife crime are:

- Wildlife and Countryside Act (1981)
- Conservation of Habitats and Species Regulations (2017)

All breeding birds are protected by law, so any work that might disturb nesting birds must be undertaken outside of breeding season. While it is not strictly speaking illegal to clear scrub or fell a tree in the summer if no birds are nesting there, I strongly advise against any habitat work during breeding season unless there is an imminent risk to health.

All bats and their roosts are protected by law. This is especially applicable here if you have any large, old or damaged trees that bats might be using. Any suspected roosts will need to be checked by an ecologist, and any management work must be done under license.

There are too many specific circumstances to list here, but if you are ever undertaking habitat work it is important to think about wildlife legislation.

While not necessarily protected, Wales has Section 7 of the Environment Wales Act 2016 that lists priority species and habitats. Its always worth looking through that list to see if you have priority species on your sites.

## **Surveys and Monitoring.**

Data and analysis are the backbone of good habitat management. Structured monitoring is best – regular, repeated, methodical surveys over time – gathering the most reliable and usable data. That being said, sporadic surveys by volunteers are still valuable and can sufficiently guide management of simple sites. It is worth trying to formalise surveys of the site for specific taxa – birds, plants, mammals etc. – making use of volunteers to track changes over time. For example, you do a full bird survey of the whole site on the first weekend of each month, you do a bat survey over the whole site once a month over spring and summer, and you do two plant surveys over the whole site – once in spring once in summer.

## Supporting information

### Mowing changes

Wildflower meadows created through natural recovery of grassland or by enhancement with planting or seed mixes are essential in meeting biodiversity targets. Reducing mowing and removing arisings is the simplest and most cost-effective way to achieve this. Removal of the arisings will reduce the nutrients in the soil and reduce the vigour of more coarse, aggressive grasses but encourage growth of wildflowers. Recreational spaces may need to be maintained with regular mowing, however other areas identified in this report could be left unmown for longer intervals. Short mowing intervals deplete the vegetation and soil health, increase the dominance of coarse grasses and reduces the benefits of green spaces for cooling, carbon sequestration, and water retention.

The diagram in Figure 1 below illustrates the large complex root structures of native wildflowers and their potential to improve soil structure, sequester carbon, and retain water, reducing surface water run-off. In contrast most rye grasses have roots that are thin and shallow rooted.

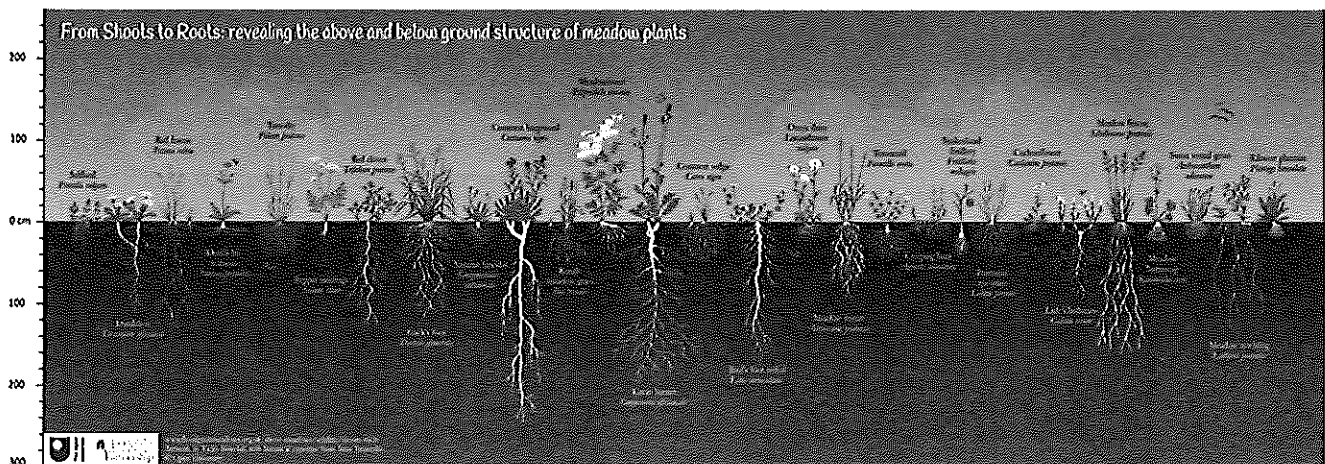


Figure 1 - Bowskill V. and Tatarenko I. (2021). *From Shoots to Roots: revealing the above and below ground structure of meadow plants.* Floodplain Meadows Partnership.

The use of the Welsh Government 'It's for Them' resources is recommended for any areas where mowing is reduced. Figure 2 below shows the use of an 'It's for Them' sign being used in a meadow in Porthmadog.



Figure 2 - An example of a customised 'It's for Them' sign being used in a meadow by Porthmadog Town Council.

Other options for seating could be planter benches like the one shown in Figure 3 below. Biodiversity projects can offer an opportunity for volunteers and community groups to get involved. This improves the skills and knowledge of the community and can contribute towards a feeling of ownership and community buy-in.



Figure 3 - An example of an integrated planter and bench

## Section 6

Section 6 of The Environment (Wales) Act 2016 requires that 'All public bodies must seek to maintain, enhance and restore biodiversity'. This includes all Community & Town Councils who are required to publish a **Report** at the end of each 3-year-round and a **Biodiversity Action Plan** detailing how it plans to meet the duty for the following 3-year period. There is a statutory requirement to publish these documents, and the next report is due by the end of 2028. One Voice Wales provides templates and guidance on creating a Biodiversity Action Plan and completing the Section 6 Report 2025. These can be found on our website.

Specific advice and guidance on completing Section 6 reporting is also available from the Biodiversity Team at One Voice Wales: [Biodiversity@onevoicewales.wales](mailto:Biodiversity@onevoicewales.wales)

## Accreditation schemes

### Bee Friendly status

Bee Friendly is an initiative to make Wales pollinator friendly. Your Council can apply to become a Bee friendly community. Find out more here: [Bee Friendly - Wales Biodiversity Partnership](#)

### Green Flag status

The Award is open to any freely accessible park or green space Your Council could apply to have Green Flag status for your green spaces. Find out more here: [How it Works - Green Flag Award](#)

### National Forest status

Woodlands will be recognised as National Forest for Wales sites by demonstrating how they meet the National Forest for Wales outcomes:

- Good Quality, well designed and managed resilient woodlands
- Woodlands accessible to people
- Community involvement in woodlands
- Connected woodlands
- Dynamic, multipurpose woodlands and trees

- Woodlands that demonstrate learning, research and innovation

Find out more here: [National Forest for Wales Status Scheme - Natural Resources Wales Citizen Space - Citizen Space](#)

Woodland management guidelines - [The UK Forestry Standard](#)

## Funding information

### Local Places for Nature funding programme

- **Local Nature Partnerships** - The aims of the projects suggested in this report would meet the aims and objectives of the Local Places for Nature programme, and as such could be a candidate for funding from your Local nature Partnership. We would be happy to assist you in developing ideas for funding through this stream.
- **OVW Packages** – Our biodiversity packages may be suitable and could provide smaller elements for the project. Find out more about our packages here: [One Voice Wales Biodiversity Packages 2025/2026](#)
- **Keep Wales Tidy** – They offer a range of free garden packages, and we can provide advice and support with the application process.

### Other funding sources

Some grant funding may not always be open to applications. Please contact us to find out more about future application windows and grant availability.

### Woodland Trust

- **Free Trees and Hedging** - The woodland trust can provide free tree and hedging packs for Community Councils. Find out more here: <https://www.woodlandtrust.org.uk/plant-trees/schools-and-communities>
- **Ancient Tree Inventory** - If you have old trees in your community you can record these here: [Ancient Tree Inventory - Woodland Trust](#)
- **Tree Equity Score** – An interactive map to identify areas of high priority for tree planting. Find out more here: <https://uk.treeequityscore.org>
- **Guides** – Lots of resources such as the [Woodland creation guide](#).

### Transport for Wales (TfW)

For sites adjacent to a railway station used by TfW customers, there are often funds available as part of the TfW Biodiversity Action Plan for communities situated along some railway lines. Whilst there are no open grants at present this may change. One Voice Wales will update the Council should any relevant grants be launched.

### National Forest for Wales Landscape Scheme

The National Forest for Wales (NFW) scheme is funded by Welsh Government and managed and distributed by WCVA. The fund supports projects across Wales that:

- Realise the economic, community, biodiversity and recreational benefits of the NFFW
- Collaborate between a number of landowners at a landscape scale
- Meet all 6 NFFW outcomes

Applicants must work with their [Local Nature Partnership](#) to develop their project.

### **Landfill disposals Tax Communities scheme**

A grant funding programme managed by [WCVA](#) to help communities living within five miles of certain waste transfer stations or landfill sites take action for their local environment.

The funded projects need to focus on one or more of the following themes:

- Biodiversity – create resilient ecological networks for the benefit of a range of habitats and species.
- Waste minimisation and the diversion of waste from landfill – promote awareness and best practice to reduce the amount of waste produced.
- Wider environmental enhancements – bring wider community benefit through improving quality of place.

Find out if your site is eligible here: [Landfill Disposals Scheme - WCVA](#)

### **Planning and Developments**

- **Section 106 funding** – This can be a good source of funding should planning permission for any large developments or infrastructure improvements be granted in the area.
- **Planning conditions** - Under Planning Policy Wales (12<sup>th</sup> ed.) any development will need to enhance biodiversity and mitigate any unavoidable losses. Should planning permission in the town for any larger developments be proposed then it could present an opportunity to propose your site for potential habitat creation.

### **The National Lottery**

The organisation has several grant schemes available to Community Councils which include elements of biodiversity and community involvement.

#### ➤ **The Heritage Fund Grant Wales**

Projects funded from £10,000 - £250,000.

No application deadline.

All projects need to meet the 4 investment principles:

- Saving heritage
- Protecting the Environment
- Inclusion, access and participation

- Organisational sustainability

➤ **Awards for all Wales**

Projects funded from £300 - £20,000.

No application deadline.

There are 4 aims to the fund. The one most relevant to your Council would be that:

Projects should aim to

- Improve the places and spaces that matter to communities



**Please contact us to discuss the different funding options once the suggestions in this report have been considered so we can offer support and advice on**



**completing grant applications.**

## **Other information**

### **Webinars and Workshops**

The Biodiversity team regularly run webinars and workshops on a variety of topics. You can find out more about events here: [Biodiversity Training and Webinars - One Voice Wales](#)

### **Training**

To help the sector develop their plans and meet this duty, One Voice Wales provides 3 training modules related to biodiversity and nature projects.

- Module 25 - Biodiversity Basics part 1
- Module 26 – Biodiversity Basics Part 2
- Module 27 – Nature project Management

Find out more about the training programme at One Voice Wales: [Training - One Voice Wales](#)

### **Resources**

We can provide resources on planting plans, trees, species and habitats. We also have our 3 Biodiversity Guides:

- Nature recovery action Guide for C&TCs
- Community Growing for C&TCs
- Biodiversity and Planning applications for C&TCs

### **Community engagement**

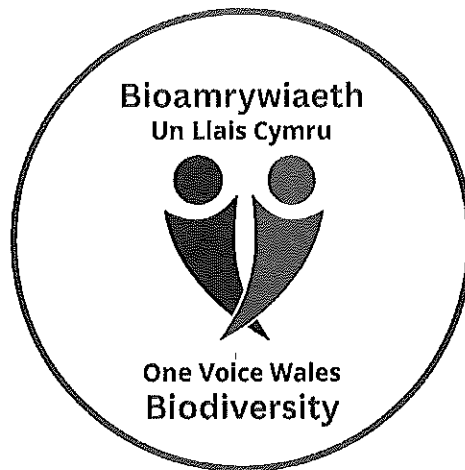
Citizen science events are a great way to get your community involved. You can find out about upcoming events here: [Biodiversity Events and Opportunities - One Voice Wales](#)

We recommend encouraging the community and visitors to use the LERC app which can be used to record any plants or animals that they see in your area. The Council could encourage residents to 'Go Lercing' and record anything they see using ID apps and a photo. All submissions are checked for accuracy, so they do not need to be experts in plant and animal ID.

Special consideration should be given to local biodiversity priorities. For more information on your local area please see your Local Nature partnership.

**For further information, help, and advice please contact the biodiversity team:**

**[Biodiversity@onevoicewales.wales](mailto:Biodiversity@onevoicewales.wales)**





## Biodiversity Action Plan – 2025-2028

### Environment (Wales) Act 2016 Part 1 – Section 6 The Biodiversity and Resilience of Ecosystems Duty

<p>Name of Town Council: Mold Town Council</p>	<p style="text-align: center;"><u>Introduction and Context</u></p> <p>Mold Town Council is the local authority serving the vibrant market town of Mold, located in Flintshire, North Wales. Nestled at the foot of the Clwydian Range – an Area of Outstanding Natural Beauty – Mold is a historic town known for its rich cultural heritage, strong community spirit, and thriving local economy.</p> <p>The town is conveniently situated approximately 10 miles west of the English border, and just 12 miles from the city of Chester, making it a key centre within North East Wales. It offers a mix of traditional charm and modern amenities, with attractions including the renowned Mold Market, Theatr Clwyd, and numerous independent shops and eateries.</p> <p>Mold Town Council represents the interests of residents, supports local services and events, and works in partnership with other organisations to enhance the wellbeing and prosperity of the town. The Council plays an important role in promoting civic pride, sustainability, and community development throughout the area.</p> <p style="text-align: center;"><u>Mold Town Council – Key Services, Activities and Responsibilities Impacting Biodiversity</u></p> <p>Mold Town Council, like other local councils in Wales, has a range of services, activities, and responsibilities that can significantly impact biodiversity. These are aligned with the Council's duties under the Environment (Wales) Act 2016. The following activities directly support or influence that duty:</p> <ul style="list-style-type: none"> <li>• Cemetery &amp; Burial Grounds Management – Managing burial spaces with sensitivity to wildlife and green habitat preservation. Enhancing biodiversity in cemeteries through wildflower planting and habitat care.</li> <li>• Town Centre Hanging Baskets and Gateway Signage – Promoting pollinator-friendly planting throughout the town and on entry to the town.</li> <li>• Grants for Community Groups – support with funding is available through the Town Council. Local groups and organisations are able to apply to support their activities.</li> <li>• Mold Town Youth Council – The Youth Council has opportunities to influence and participate in environmental projects.</li> <li>• Planning – Mold Town Council's Planning Committee is a consultee on Planning Applications and can advocate for biodiversity as a consultee.</li> <li>• Events and Community Engagement – Mold Town Council supports local events and groups that promote biodiversity, such as Mold Spring Clean.</li> </ul>
--	---

Objective	Biodiversity objectives	Action planned	Progress	Monitored by:
1	<ul style="list-style-type: none"> <li>- Embed biodiversity into decision making &amp; procurement</li> </ul>	<ul style="list-style-type: none"> <li>- When discussing planning applications, effects on biodiversity is also considered when providing responses as a statutory consultee.</li> <li>- Embed biodiversity as a standard agenda item within one or more appropriate Mold Town Council committees to ensure ongoing oversight and integration into decision making.</li> <li>- Continue engagement with Flintshire County Council and relevant partners regarding climate change and biodiversity initiatives.</li> <li>- Ensure biodiversity and environmental sustainability considerations are included within relevant procurement and purchasing decisions where practical.</li> <li>- Review opportunities to reduce the environmental impact of Town Council operations, including energy use, waste reduction and sustainable purchasing.</li> </ul>	Ongoing	Chair of Planning Committee
	<ul style="list-style-type: none"> <li>- Raise awareness of biodiversity &amp; its importance</li> </ul>	<ul style="list-style-type: none"> <li>- Utilise Mold Town Council communication channels, including social media, to share biodiversity information, local environmental initiatives and seasonal wildlife updates.</li> <li>- Include Climate Change as an agenda item for discussion at Mold Town Youth Council Meeting.</li> <li>- Develop a dedicated biodiversity section within the new Mold Town Council website to provide accessible information on biodiversity projects, wild life friendly practices, relevant legislation and local initiatives.</li> </ul>	Ongoing	Town Clerk
			Ongoing	Town Clerk
			Ongoing	Town Clerk and Chairs of Committees
			Ongoing	Town Clerk and Chairs of Committees
			Ongoing	Town Clerk and Chairs of Committees
			Ongoing	Town Clerk
			Ongoing	Town Clerk
			Ongoing	Town Clerk

			Ongoing	Town Clerk
		<ul style="list-style-type: none"> <li>- Promote local species recording initiatives through the Council's website and social media channels.</li> </ul>	Ongoing	Town Clerk
<b>2</b>	<ul style="list-style-type: none"> <li>- Safeguard principle species and habitats</li> </ul>	<ul style="list-style-type: none"> <li>- Continue promoting species recording and wildlife observation initiatives linked to Bailey Hill and other local green spaces through partnership working.</li> <li>- Continue promoting species recording and wildlife observation initiatives linked to Bailey Hill and other local green spaces through partnership working</li> <li>- Continue retaining suitable deadwood and natural habitat areas within Mold Cemetery where operationally appropriate.</li> <li>- Undertake periodic biodiversity monitoring within Mold Cemetery, including formal recording of birds, pollinators and flora to support future management decisions.</li> <li>- Ensure biodiversity and wildlife legislation is considered before undertaking habitat or vegetation management works.</li> </ul>	<p>Annual</p> <p>Ongoing</p> <p>Ongoing</p> <p>Ongoing</p> <p>Ongoing</p>	<p>Town Clerk</p> <p>Town Clerk/ Support Officer</p> <p>Town Clerk/ Cemetery Superintendent</p> <p>Town Clerk/ Cemetery Superintendent</p> <p>Town Clerk/ Cemetery Committee</p>
<b>3</b>	<ul style="list-style-type: none"> <li>- Restore &amp; create habitats and resilient ecological networks</li> </ul>	<ul style="list-style-type: none"> <li>- Continue selecting pollinator-friendly plants and flowers for hanging baskets, planters and gateway signs.</li> <li>- Continue creating and maintaining wildlife friendly areas with Mold Cemetery where operationally suitable.</li> <li>- Continue annual maintenance of the Bailey Hill Centre living roof through partnership arrangements.</li> <li>- Continue to avoid the use of pesticides, herbicides and peat-based products where operationally feasible.</li> </ul>	<p>Annual</p> <p>Ongoing</p> <p>Annual</p> <p>Ongoing</p>	<p>Community &amp; Engagement Officer</p> <p>Cemetery Superintendent/ Cemetery Committee</p> <p>Admin Support Officer – Bailey Hill</p> <p>Cemetery Superintendent</p>

		<ul style="list-style-type: none"> <li>- Create habitat piles and natural invertebrate habitats within suitable areas of Mold Cemetery using retained timber, logs and natural materials where appropriate.</li> <li>- Explore opportunities for additional pollinator friendly planting and habitat enhancement within Mold Cemetery.</li> </ul>	Ongoing	Cemetery Superintendent Cemetery Superintendent/ Cemetery Committee
4	<ul style="list-style-type: none"> <li>- Tackle negative factors: for e.g. reduce pollution, use nature-based solutions, address invasive species.</li> </ul>	<ul style="list-style-type: none"> <li>- Review energy contracts and seek greener and more sustainable suppliers where feasible.</li> <li>- Continue reviewing and strengthening measures to reduce single use plastics at Town Council supported events.</li> <li>- Promote environmentally responsible waste management and recycling practices at Town Council premises and supported events.</li> <li>- Encourage sustainable event management practices when working with external businesses, contractors and community organisations</li> </ul>	Ongoing Ongoing Ongoing Ongoing	Town Clerk Events and Community Engagement Officer Town Clerk/ Events and Community Engagement Officer Town Clerk/ Events and Community Engagement Officer
5	<ul style="list-style-type: none"> <li>- Use, improve, and share experience</li> </ul>	<ul style="list-style-type: none"> <li>- Continue to utilise the Council's social media platforms to disseminate information on Council services, community initiatives, and environmental priorities, ensuring consistent and accessible communication with residents.</li> <li>- Explore opportunities for volunteer involvement in biodiversity projects and habitat management activities linked to Mold Cemetery.</li> <li>- Work collaboratively with partner organisations, community groups and volunteers to support biodiversity initiatives where opportunities arise.</li> </ul>	Ongoing Ongoing Ongoing	Town Clerk Cemetery Superintendent/ Cemetery Committee Town Clerk

<p>6</p>	<ul style="list-style-type: none"> <li>- Support capacity and/or other organisations</li> </ul>	<ul style="list-style-type: none"> <li>- Continue supporting local groups and organisation through the Town Grants process where projects contribute positively to biodiversity, sustainability and environmental wellbeing.</li> <li>- Continue having a Mold Town Council representative on Mold Plastic Reduction Steering Group.</li> <li>- Continue discussions with Flintshire County Council regarding opportunities to support biodiversity enhancement projects within publicly owned green spaces.</li> <li>- Continue partnership working with stakeholders involved in the management and improvement of Bailey Hill and other local green spaces.</li> <li>- Explore opportunities to establish or support community-led environmental or "Friends of" groups where appropriate and feasible.</li> </ul>	<p>Ongoing</p> <p>Ongoing</p> <p>Ongoing</p> <p>Ongoing</p> <p>Ongoing</p>	<p>Finance Committee</p> <p>Town Clerk</p> <p>CDR Committee</p> <p>CDR Committee</p> <p>CDR Committee</p>

